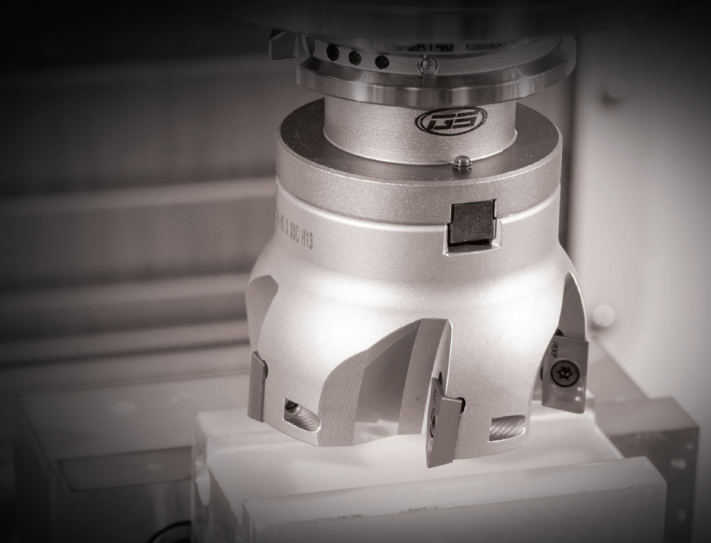


INDEXABLE KITS



**In Stock &
Available Online!**



MCLNR/L Turning Kits



Consists of:
1 - MCLNR/L Toolholder
10 - CNMG 432 Inserts (Coated)

Application	Material	Kit Contents	Right Hand Kit Code No.	Price \$
Medium	Steel	1 pc MCLNR 16-4D (145-828)/MCLNL 16-4D (145-829) 10 pcs CNMG 432 MM PT22C (146-557)	149801	398.05
Medium/Finishing	Steel	1pc MCLNR 16-4D (145828) 10pcs CNMG 432 M PT25C (149231)	149363	394.55

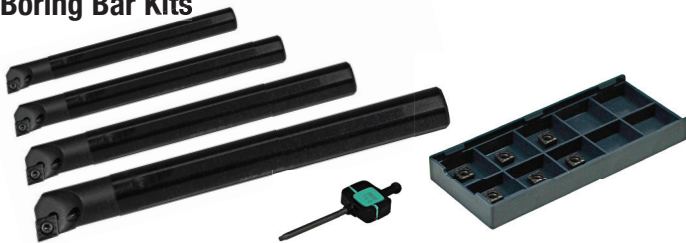
MDJNR/L Turning Kits



Consists of:
1 - MDJNR/L Toolholder
10 - DNMG 432 Inserts (Coated)

Application	Material	Kit Contents	Right Hand Kit Code No.	Price \$
Medium	Steel	1 pc MDJNR 16-4D (145-845)/MDJNL 16-4D (145-846) 10 pcs DNMG 432 MM PT22C (148-669)	149808	431.97

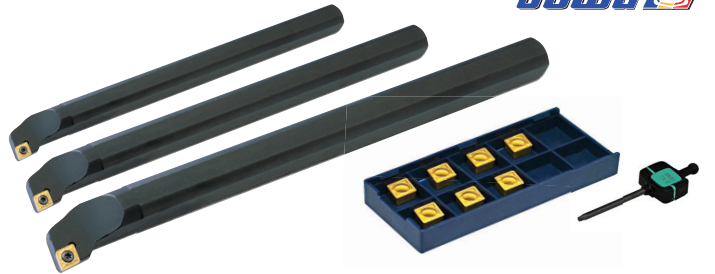
A-SCLCR Coolant Through Boring Bar Kits



Consists of:
1 - 5/16" ø B/Bar, A-SCLCR 5-2 (146589) 1 - 5/8" ø B/Bar, A-SCLCR 10-2 (147348)
1 - 3/8" ø B/Bar, A-SCLCR 6-2 (146590) 1 - wrench (146939)
1 - 1/2" ø B/Bar, A-SCLCR 8-2 (146591) 10 - CC_T21.51 Inserts

Application	Material	Kit Contents	Right Hand Kit Code No.	Price \$
Medium	Steel	1pc A-SCLCR 5/16", 3/8", 1/2", 5/8 10pcs CCMT 21.51 F2P PT25C (149227)	149483	735.75

SI-SCLCR/L Master Boring Bar Kits



Consists of:
1 - 5/8" ø B/Bar, SI-SCLCR 10-3 (145925) 10 - CCMT 32.51 inserts
1 - 3/4" ø B/Bar, SI-SCLCR 12-3 (145926) 1 - wrench (146940)
1 - 1" ø B/Bar, SI-SCLCR 16-3 (145927)

Application	Material	Kit Contents	Right Hand Kit Code No.	Price \$
Medium	Steel	1 pc SI SCLCR 5/8", 3/4", 1" Boring Bars 10 pcs CCMT 32.51 F2P PT22C (146-361)	149844	612.04
Medium	Steel	1pc SI SCLCR 5/8", 3/4", 1" Boring Bars 10pcs CCMT 32.51 F2P PT25C (149220)	149471	612.04

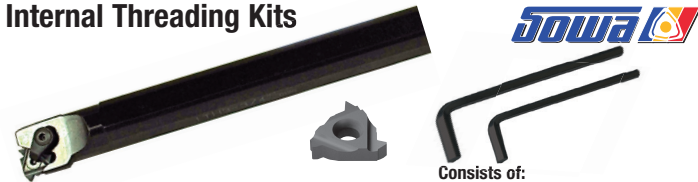
MTG — Multi Turn Groove Kits



Consists of:
 1 - MGEHR Toolholder
 5 - MGMN Inserts (Coated)

Kit Contents	Insert	Kit Code No.	Price \$
MGEHR 16-4 1" Shank (148074) c/w 5-4mm inserts (149237)	MGMN 400M PT25C	149642	353.12

Internal Threading Kits



Consists of:
 1 - ITH3 Toolholder
 2 - ICTR 300 Inserts (Coated)

Kit Contents	Insert	Kit Code No.	Price \$
3/4" Toolholder (146255) c/w 2pcs - 3/8" Partial Profile inserts Coated (146610)	ICTR 300 8-28 PM30P	149842	289.13
1" Toolholder (146254) c/w 2pcs - 3/8" Partial Profile inserts Coated (146610)	ICTR 300 8-28 PM30P	149843	324.26

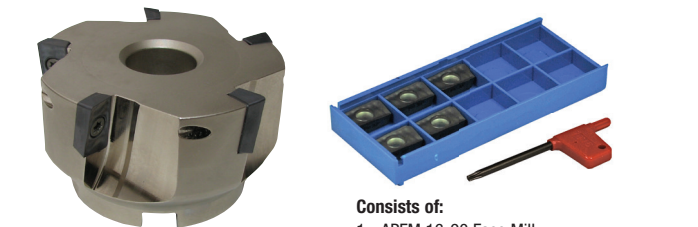
External Threading Kits



Consists of:
 1 - ETH3 Toolholder
 2 - ECTR 300 Inserts (Coated)

Kit Contents	Insert	Kit Code No.	Price \$
3/4" Toolholder (146708) c/w 2pcs 3/8" Partial Profile inserts Coated (146597)	ECTR 300 8-28 PM30P	149839	225.60
1" Toolholder (146290) c/w 2pcs 3/8" Partial Profile inserts Coated (146597)	ECTR 300 8-28 PM30P	149840	239.63

APFM Face Mill Kits



Consists of:
 1 - APFM 16-90 Face Mill
 10 - APKT 1604 Inserts (Coated)

Kit Contents	Insert	Kit Code No.	Price \$
2" Face Mill (147009) c/w 10 inserts (147333)	APKT 1604 PDSR M PM30P	149907	660.56

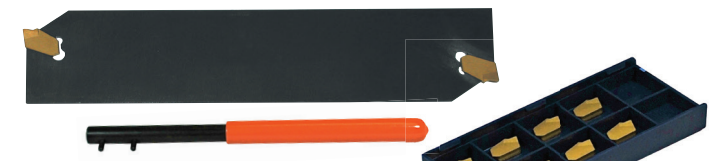
SI-SDUCR Boring Bar Kits



Consists of:
 1 - 3/8" Ø B/Bar, SI-SDUCR 6-2 (145939)
 1 - 1/2" Ø B/Bar, SI-SDUCR 8-2 (145940)
 1 - 5/8" Ø B/Bar, SI-SDUCR 10-2 (145941)
 10 DC_T21.51 Inserts

Application	Material	Kit Contents	Right Hand Kit Code No.	Price \$
Medium	Steel	1 pc SI-SDUCR 3/8", 1/2", 5/8" Boring Bars 10 pcs DCMT 21.51 F2P PT22C (146-578)	149851	483.53
Medium	Steel	1pc SI-SDUCR 3/8", 1/2", 5/8" Boring Bars 10pcs DCMT 21.51 F2P PT25C (149260)	149485	483.53

PRO Part Off Kits



Consists of:
 1 - PP-B Part Off Blade
 10 - SP 300 Inserts (Coated)
 1 - SW15S Wrench

Kit Contents	Insert	Kit Code No.	Price \$
PP-B 326S 1" Blade (146232) c/w 10-1/8" inserts (146452)	SP300 PT30C	149835	434.96
PP-B 332S 1-1/4" Blade (146898) c/w 10-1/8" inserts (146452)	SP300 PT30C	149836	425.53

PRO Part Off Kits



Consists of:
 1 - PP-B Part Off Blade
 1 - P.O.B. Part Off Block
 10 - SP 300 Inserts (Coated)
 1 - SW15S Wrench

Kit Contents	Insert	Kit Code No.	Price \$
PP-B 326S 1" Blade (146232) c/w 10-1/8" inserts (146452) & P.O.B. 19-5 Part Off Block (146510)	SP300 PT30C	149837	671.40
PP-B 326S 1-1/4" Blade (146898) c/w 10-1/8" inserts (146452) & P.O.B. 25; 4-6 Part Off Block (145895)	SP300 PT30C	149838	631.37



TOOLING
YOUR
WORLD.

Sowa Tool & Machine Co. Ltd.

Order online at www.SowaTool.ca, email sales@sowatool.com or call 1-800-265-8221.

While quantities last. We reserve the right to make pricing changes or impose purchase restrictions at any time, and accept no liabilities for mistakes and printing errors. Shipping charges apply & will be noted on invoice. All taxes extra.