



TOOLING
YOUR
WORLD.



Drill Chucks & Adapters



Keyless Drill Chucks	3
Bearing Drill Chucks	4
Chuck Keys and Wrenches	4
Taper Adapters	5
Boring Head Holders	5
Retention Knobs	6



TOOLING
YOUR
WORLD.

Retention Knobs

A fit for every machine



Tool Holding

Collet Chucks, Shrink Fit, End Mill, Shell Mill, Tapping Heads, Drill Chucks, Boring Heads, Right Angle Heads



Collets

ER Collets, TG Collets, DA Collets, 5C Collets, R8 Collets, Milling Chuck Collets



Cutting Tools

End Mills, Drills, Taps, Indexables and Indexable Holders



Measuring & Inspecting

Calibration, Layout & Machine Setup, Dimensional Measuring Tools



Workholding

Vises, Live Centers, Lathe Chucks, Clamping Kits, Fixturing



A holder for every application.
What's your combo?

SOWA TOOLING YOUR WORLD
www.SowaTool.com

Explore all of our rotary tooling systems.

Sowa Tool offers a large SKU offering of a wide range of quality rotary tooling: End Mill Holders, Collet Chucks & Collets, Shell Mill & Face Mill Holders, Shrink Fit Holders, Tap Holders, Driven Tooling & Angle Heads.

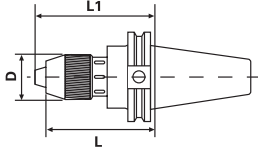


CAT Taper Integral Keyless Drill Chucks



These chucks provide exceptionally high torque - up to three times the gripping strength of conventional drill chuck / taper holder combinations. The design eliminates any possibility of chuck / holder misalignment, and it assures separation safety.

- High precision, premium tolerance
- The jaws feature a TiN coated surface treatment to assure durability
- AT2 Taper Accuracy
- RFID Chip Hole



Taper	Cap.	L	L1	D	Code No.
CT40	1/4	2.559	2.795	1.3	531480
CT40	1/2	4.527	4.992	1.97	531482
CT40	5/8	4.724	5.236	2.24	531483
CT50	1/2	3.54	3.996	1.97	531484
CT50	5/8	3.7	4.134	2.24	531485

NMTB Taper Integral Keyless Drill Chucks



These chucks provide exceptionally high torque - up to three times the gripping strength of conventional drill chuck / taper holder combinations. The design eliminates any possibility of chuck / holder misalignment, and it assures separation safety.

- High precision, premium tolerance
- The jaws feature a TiN coated surface treatment to assure durability



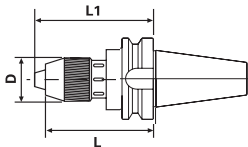
Taper	Cap.	Gauge Length (Open)	Gauge Length (Closed)	Chuck Dia.	Code No.
NMTB40	1/2	3.75	4.20	1.97	534406
NMTB50	1/2	3.35	3.74	1.97	534408

BT Taper Integral Keyless Drill Chucks



These chucks provide exceptionally high torque - up to three times the gripping strength of conventional drill chuck / taper holder combinations. The design eliminates any possibility of chuck / holder misalignment, and it assures separation safety.

- High precision, premium tolerance
- The jaws feature a TiN coated surface treatment to assure durability
- AT2 Taper Accuracy
- RFID Chip Hole



Taper	Cap.	L	L1	D	Code No.
BT30	1/4	3.15	3.38	1.3	532210
BT30	1/2	3.55	4.02	1.97	532212
BT40	1/4	2.95	3.19	1.3	532214
BT40	1/2	3.74	4.18	1.97	532216
BT50	5/8	5.12	5.59	2.24	532219

Morse Taper Integral Keyless Drill Chucks



These chucks provide exceptionally high torque - up to three times the gripping strength of conventional drill chuck / taper holder combinations. The design eliminates any possibility of chuck / holder misalignment, and it assures separation safety.

- High precision, premium tolerance
- The jaws feature a TiN coated surface treatment to assure durability



Shank	Gripping Dia. (mm)	Chuck Dia.	Gauge Length	Code No.
M.T. 4	0-13	51	100	337426
M.T. 4	3-16	57	120	337428

R8 Integral Keyless Drill Chucks



These chucks provide exceptionally high torque - up to three times the gripping strength of conventional drill chuck / taper holder combinations. The design eliminates any possibility of chuck / holder misalignment, and it assures separation safety.

- High precision, premium tolerance
- The jaws feature a TiN coated surface treatment to assure durability



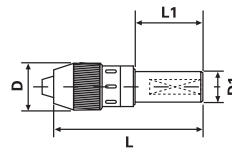
Shank	Gripping Dia. (mm)	Chuck Dia.	Gauge Length	Draw Bar	Code No.
R-8	0-13	51	100	7/16-20	337430
R-8	3-16	57	120	7/16-20	337432

Straight Shank Integral Keyless Drill Chucks



These chucks provide exceptionally high torque - up to three times the gripping strength of conventional drill chuck / taper holder combinations. The design eliminates any possibility of chuck / holder misalignment, and it assures separation safety.

- High precision, premium tolerance
- The jaws feature a TiN coated surface treatment to assure durability



Capacity	D1	L	L1	D	Code No.
1/4	3/4	5.87	2.56	1.34	534410
1/2	1-1/4	6.06	2.56	1.97	534414

Replacement Drill Chucks



These chucks provide exceptionally high torque - up to three times the gripping strength of conventional drill chuck / taper holder combinations. The design eliminates any possibility of chuck / holder misalignment, and it assures separation safety.



Description	Code No.
1/4" chuck	534422
1/2" chuck for BT40 / CAT50	534424
1/2" chuck for CAT40 / NMTB40	534425
5/8" chuck for CAT40/50, BT40	534427

Super Heavy Duty Ball Bearing Drill Chucks

GS Ball Bearing Chucks are specially designed for HEAVY DUTY drilling applications on production drilling machines, jig borers, milling machines, lathes and radials. The ideal choice for those jobs that require close tolerance drilling. The ball thrust bearing reduces friction in the chuck's closing mechanism, so the operator can apply more gripping power on the twist drill shank.

- High precision, premium tolerance



Chuck Model	Capacity (in.)	Mount	Code No.
13BXH	3/64-1/2	JT6	536500
16BXH	3/64-5/8	JT3	536502
19BXH	3/64-3/4	JT4	536504

Plain Bearing Drill Chucks

GS Plain Bearing Chucks are specially designed for stationary drilling, turning, milling, and woodworking machines.

- Sleeve design eliminates the possibility of tooth breakage
- Hardened jaws and body help to avoid wear and lengthen the life of the chuck
- Each chuck supplied with a key



Chuck Model	Capacity (in.)	Mount	Code No.
13GH	3/64-1/2	JT6	536516
16GH	3/64-5/8	JT3	536520

Super Precision Keyless Drill Chucks

Keyless chucks are engineered to quickly loosen and tighten a tool on the chuck collar of the drill, either by manual operation or when torque is applied. Rotating the chuck collar in a counterclockwise direction will loosen the tool.

- High precision, premium tolerance
- The jaws feature a TiN coated surface treatment to assure durability



Chuck Model	Capacity (in.)	Mount	Code No.
6XH	1/64-1/4	JT1	536524
6XH	1/64-1/4	3/8 -24	536526
10XH	1/64-3/8	JT2	536528
10XH	1/64-3/8	JT33	536530
13XH	1/64-1/2	JT6	536534
13XH	1/64-1/2	JT33	536536
13XH	1/64-1/2	1/2 -20	536538
16XH	1/8-5/8	JT6	536540
16XH	1/8-5/8	JT33	536542

Drill Chuck Keys

- Nickel thumb grip
- The potential for fracturing under excessive load is limited due to soft steel handles



Chuck Model	Key No.	Code No.
13GH 1/2 JT33	P6	536548
13GH 1/2 JT6	P6	536548
16GH 5/8	P7	536550
19GH 3/4	P7	536550
13BXH	P6	536548
16BXH	P7	536550
19BXH	P7	536550

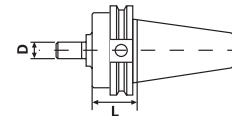
Replacement Chuck Wrenches



Description	Code No.
Fits 1/4" chucks	534418
Fits 1/2" chucks	534420
Fits 5/8" chucks	534431

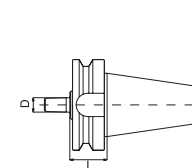
CAT Taper Jacobs Taper Adapter

- Shank traverse ground to obtain optimum accuracy
- Meets or exceeds ANSI specifications
- 0.0002" or better ensures the best possible cutting tool life



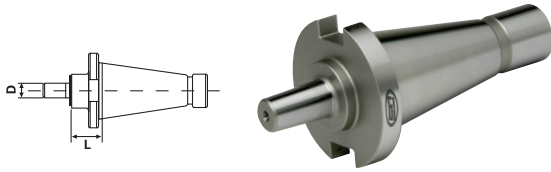
Taper	JT Size	L	D	Code No.
CT40	JT#2	1.61	0.560	531490
CT40	JT#3	1.58	0.812	531492
CT40	JT#4	1.49	1.13	531494
CT40	JT#6	1.61	0.677	531496
CT40	JT#33	1.61	0.625	531498
CT50	JT#2	1.61	0.560	531500
CT50	JT#3	1.58	0.812	531502
CT50	JT#4	1.49	1.13	531504
CT50	JT#6	1.61	0.677	531506
CT50	JT#33	1.61	0.625	531508

BT Taper Jacobs Taper Adapter



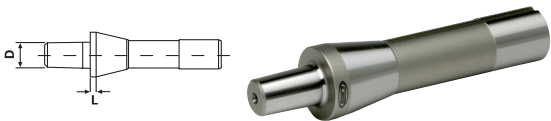
Taper	JT Size	L	D	Code No.
BT30	JT#6	1.02	0.677	532224
BT40	JT#2	1.61	0.560	532230
BT40	JT#3	1.57	0.812	532232
BT40	JT#6	1.61	0.677	532234
BT40	JT#33	1.61	0.625	532236
BT50	JT#6	1.77	0.677	532237

NMTB Taper Jacobs Taper Adapter



Taper	JT Size	L	D	Code No.
NMTB40	JT#2	0.65	0.560	534442
NMTB40	JT#3	0.61	0.812	534444
NMTB40	JT#6	0.65	0.677	534446
NMTB40	JT#33	0.65	0.625	534448
NMTB50	JT#3	1.30	0.812	534452
NMTB50	JT#4	1.22	0.113	534454

R8 Jacobs Taper Adapter



Taper	JT Size	L	D	Code No.
R8	JT#2	0.13	0.560	534462
R8	JT#3	0.13	0.812	534464
R8	JT#6	0.13	0.677	534466
R8	JT#33	0.13	0.625	534468

CAT Morse Taper Adapters



- Shank traverse ground to obtain optimum accuracy
- Meets or exceeds ANSI specifications
- 0.0002" or better ensures the best possible cutting tool life



Taper	Size	L	D	D1	Code No.
CT40	MT#1	1.75	0.475	1.00	531510
CT40	MT#2	2.36	0.700	1.25	531512
CT40	MT#3	3.00	0.938	1.57	531514
CT40	MT#4	3.54	1.23	1.97	531516
CT50	MT#2	1.75	0.700	1.25	531518
CT50	MT#3	1.75	0.938	1.57	531520
CT50	MT#4	3.00	1.23	1.97	531522
CT50	MT#5	4.13	1.75	2.75	531524

BT Morse Taper Adapters

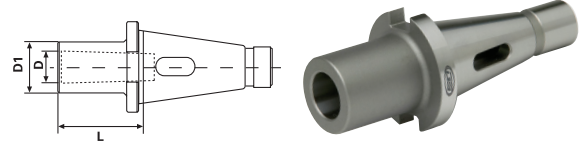


- Shank traverse ground to obtain optimum accuracy
- Meets or exceeds ANSI specifications
- 0.0002" or better ensures the best possible cutting tool life



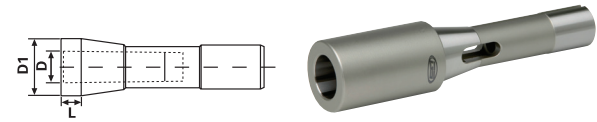
Taper	Size	L	D	D1	Code No.
BT30	MT#1	1.75	0.475	1.00	532238
BT40	MT#1	1.75	0.475	1.00	532242
BT40	MT#2	2.36	0.700	1.25	532244
BT40	MT#3	3.00	0.938	1.57	532246
BT40	MT#4	3.54	1.23	1.97	532248
BT50	MT#2	1.75	0.700	1.25	532241
BT50	MT#3	1.75	0.928	1.57	532243
BT50	MT#4	3.00	1.231	1.89	532245
BT50	MT#5	4.00	1.748	2.48	532247

NMTB Morse Taper Adapters



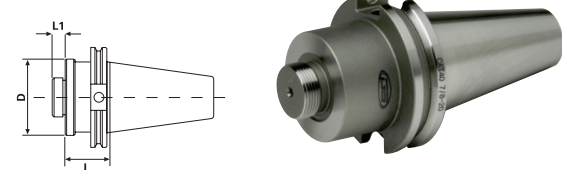
Taper	Size	L	D	D1	Code No.
NMTB40	MT#2	1.75	0.70	1.25	534472
NMTB40	MT#3	2.25	0.94	1.57	534474
NMTB40	MT#4	3.00	1.23	1.97	534476
NMTB50	MT#2	1.88	0.70	1.25	534478
NMTB50	MT#3	2.38	0.94	1.57	534480
NMTB50	MT#4	3.25	1.23	1.97	534482
NMTB50	MT#5	4.63	1.75	2.75	534484

R8 Morse Taper Adapters



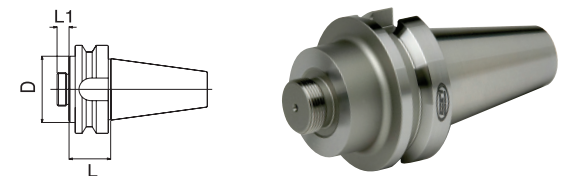
Taper	Size	L	D	D1	Code No.
R8	MT#1	0.44	0.48	1.00	534486
R8	MT#2	0.44	0.70	1.25	534488
R8	MT#3	2.56	0.94	1.57	534490

CT Taper Boring Head Holders



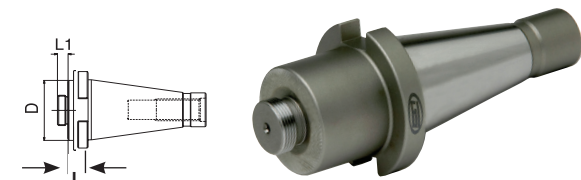
Taper	Thread	L	L1	D	Code No.
CT40	7/8 - 20	1.75	0.44	1.75	531526
CT40	1-1/2 - 18	1.75	0.50	2.96	531528
CT50	1-1/2 - 18	1.75	0.50	2.96	531532

BT Taper Boring Head Holders



Taper	Thread	L	L1	D	Code No.
BT30	1-1/2-18	1.75	0.50	2.96	532252

NMTB Taper Boring Head Holders



Taper	Thread	L	L1	D	Code No.
NMTB40	7/8-20	1.75	0.44	1.75	534492
NMTB50	7/8-20	1.75	0.44	1.75	534496
NMTB50	1-1/2-18	1.75	0.50	2.94	534498

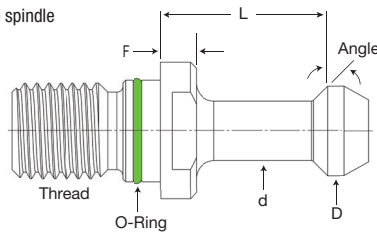
Retention Knobs

- Ground Pilot
- O-Ring on Pilot to prevent coolant penetration into the spindle

Can't find your retention knob?

We invite your inquiries.
Please have ready the following information when calling:

- Taper of Machine
- Make and Model No. of the Machine
- Draw Bar Thread Diameter and Pitch
- Taper Angle required underneath head of stud



Taper	Model	Coolant Through	D	d	L	F	Angle	Thread	Code No.
BT30	GS585X45	N	0.433	0.276	0.709	0.197	45	M12x1.75	366000
BT30	GS585X60	N	0.433	0.276	0.709	0.197	60	M12x1.75	366002
BT40	PS444X15	N	0.748	0.551	0.905	0.275	15	M16x2	366003
BT40	GSC444X15	Y	0.748	0.551	0.905	0.275	15	M16x2	366004
BT40	GS444X45	N	0.590	0.390	1.102	0.236	45	M16x2	366006
BT40	GS444X60	N	0.590	0.390	1.102	0.236	60	M16x2	366008
BT40	PS444X90	N	0.590	0.390	1.102	0.236	90	M16x2	366010
BT40	GSC444X45	Y	0.590	0.390	1.102	0.236	45	M16x2	366012
BT40	GSC444X60	Y	0.590	0.390	1.102	0.236	60	M16x2	366014
BT40	PSC444X90	Y	0.590	0.390	1.102	0.236	90	M16x2	366016
BT40	PS477	N	0.740	0.490	0.552	0.236	45	M16x2	366018
BT40	PSC478	Y	0.740	0.490	0.440	0.120	45	M16x2	366020
BT40	PSC479	Y	0.740	0.490	0.552	0.120	45	M16x2	366022
BT40	GSC477	Y	0.740	0.490	0.552	0.236	45	M16x2	366024
BT40	PSC480X15	Y	0.748	0.551	0.900	0.157	15	M16x2	366026
BT40	PS534X45	N	0.590	0.390	0.990	0.236	45	M16x2	366028
BT40	PS554	N	0.594	0.406	1.250	0.187	45	M16x2	366030
BT40	PSC554	Y	0.594	0.406	1.250	0.187	45	M16x2	366032
CT40	GSC470X15	Y	0.748	0.551	0.787	0.157	15	5/8x11	366034
CT40	GS474	N	0.740	0.490	0.440	0.118	45	5/8x11	366036
CT40	GSC474	Y	0.740	0.490	0.440	0.118	45	5/8x11	366038
CT40	GSC475	Y	0.740	0.490	0.440	0.120	45	5/8x11	366040
CT40	GS475	N	0.740	0.490	0.440	0.120	45	5/8x11	366042
CT40	PS498	N	0.590	0.390	0.777	0.200	90	5/8x11	366044
CT40	PS531X45	N	0.590	0.390	1.000	0.236	45	5/8x11	366046
CT40	GS532X15	N	0.748	0.551	0.792	0.275	15	5/8x11	366048
CT40	GS532X45	N	0.590	0.390	0.990	0.236	45	5/8x11	366050
CT40	GS532X60	N	0.590	0.390	0.990	0.236	60	5/8x11	366052
CT40	GS532X90	N	0.590	0.390	0.990	0.236	90	5/8x11	366054
CT40	GSC532X15	Y	0.748	0.551	0.792	0.275	15	5/8x11	366056
CT40	GSC532X45	Y	0.590	0.390	0.990	0.236	45	5/8x11	366058
CT40	GSC532X60	Y	0.590	0.390	0.990	0.236	60	5/8x11	366060
CT40	GSC532X90	Y	0.590	0.390	0.990	0.236	90	5/8x11	366062
CT40	PS552	N	0.594	0.406	1.139	0.187	45	5/8x11	366064
CT40	PSC552	Y	0.594	0.406	1.139	0.187	45	5/8x11	366066
CT40	GS572X45	N	0.590	0.390	0.990	0.120	45	5/8x11	366068
CT40	PS572X60	N	0.590	0.390	0.990	0.120	60	5/8x11	366070
CT40	PS572X90	N	0.590	0.390	0.990	0.120	90	5/8x11	366072
CT40	PSC572X45	Y	0.590	0.390	0.990	0.120	45	5/8x11	366074
CT40	PSC572X60	Y	0.590	0.390	0.990	0.120	60	5/8x11	366076
CT40	PSC572X90	Y	0.590	0.390	0.990	0.120	90	5/8x11	366078
CT45	PSC375	Y	0.940	0.605	0.580	0.160	45	3/4x10	366080
BT50	PSC278	Y	1.140	0.820	0.700	0.200	45	M24x3	366082
BT50	GS446X45	N	0.906	0.669	1.378	0.394	45	M24x3	366084
BT50	PS446X60	N	0.906	0.669	1.378	0.394	60	M24x3	366086
BT50	PS446X90	N	0.906	0.669	1.378	0.394	90	M24x3	366088
BT50	GSC446X45	Y	0.906	0.669	1.378	0.394	45	M24x3	366090
CT50	GS275	N	1.140	0.820	0.700	0.200	45	1x8	366092
CT50	PSC274	Y	1.140	0.820	0.700	0.200	45	1x8	366094
CT50	GSC275	Y	1.140	0.820	0.700	0.200	45	1x8	366096
CT50	GS536X45	N	0.906	0.669	1.386	0.394	45	1x8	366098
CT50	GS536X60	N	0.906	0.669	1.386	0.394	60	1x8	366100
CT50	GS536X90	N	0.906	0.669	1.386	0.394	90	1x8	366102
CT50	GSC536X45	Y	0.906	0.669	1.386	0.394	45	1x8	366104
CT50	GSC536X60	Y	0.906	0.669	1.386	0.394	60	1x8	366106
CT50	GSC536X90	Y	0.906	0.669	1.386	0.394	90	1x8	366108



Superior performance tooling solutions when speed and accuracy matter most.

GS Tooling is an industry leader in precision tooling where high-performance and stringent quality standards are essential. Tool Your World with GS Tooling End Mill Holders, Collet Chucks & Collets, Shrink Fit Solutions, Retention Knobs, Vises & Workholding, Live Centers, Angle Heads, Carbide End Mills and more!



Shop
GS Tooling



Tool Holding



Angle Heads & Driven Tooling

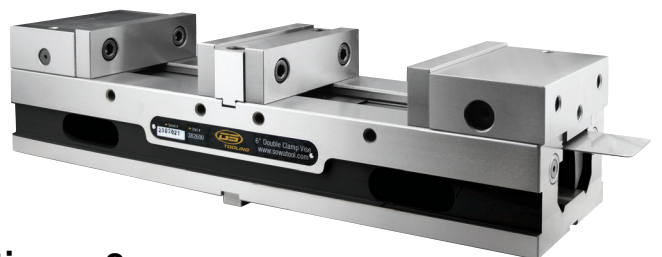


Cutting Tools



Shrink Fit Solutions

ShrinkSMART



Vises & Workholding



Welcome to the **SOWA** family!



Sowa Tool's premium brand delivers top-tier quality and performance that rivals or exceeds the best in the world. These products offer premium features and dependability, at shockingly affordable prices, making them an ideal choice for applications where accuracy and speed matter most.

ASIMETO

Sowa's family of metrology solutions deliver absolute confidence born from its European engineering, and each tool beginning its journey in our ISO 17025 accredited labs. This premium heritage product priced at a non-premium price, delivers significant value for your money.



With our Sowa branded tools, we bring to our customers high performance cutting tools engineered to deliver superior tool life, machining efficiency & quality while still offering maximum value for your money.

SKODA

Sowa Tool's exclusive line of general-purpose live centres with its roots in European quality that deliver excellent accuracy, rigidity, and durability at a price point that suits most budgets. Sowa carries a wide range of in-stock standard models to suit most common turning applications.



Sowa Tool's exclusive line of European universal boring and facing heads offer superior accuracy and precision for all your facing and boring applications. They feature an easy-to-adjust design, durable castings, and precision spindle bearings for a consistently accurate finish.



Our approach to this brand ensures that our customers receive the best value for their investment by delivering a broad assortment of cutting tools at an exceptional value. These tools typically apply to less demanding applications seen on the standard shop floor where the cost of the tool has the greatest influence on the selection process.



At Sowa Tool & Machine

we understand the needs of machining processes, and our extensive product lines offer a comprehensive solution. Our goal is to provide customers with the cost benefits of a single-source supplier, while remaining committed to delivering the highest quality products.

Ask for them by name!



Sowa Tool & Machine Co. Ltd.

Canadian Headquarters
500 Manitou Drive, Kitchener, ON, N2C 1L3
US Headquarters
101-137 Overhill Drive, Mooresville, NC 28117

Shop Online:

www.**SowaTool**.ca

sales@sowatool.com
TF: 1-800-265-8221