



TOOLING
YOUR
WORLD.



Metalworking Accessories Plus+

Drills, Taps, Drill Chucks	2-3
Measuring & Inspecting	4-5
Deburring, Abrasives, Accessories.	6-7
Hand Tools	8-9
Storage, Cutting Tools, Vises	10
Welding, Drill Sharpeners	11

29 Piece Fractional Sets



Description	Code No.
1/16"-1/2" x 64ths, HSS	128119
STM 1/16"-1/2" x 64ths, Black/Gold	105380
1/16"-1/2" x 64ths, TiAlN Tip	127050

60 Piece Wire Gauge Sets



Description	Code No.
#1-#60, HSS	128190
#1-#60, TiAlN Tip	127190

Plain Bearing Drill Chucks

GS Plain Bearing Chucks are specially designed for stationary drilling, turning, milling, and woodworking machines.

- Sleeve design eliminates the possibility of tooth breakage
- Hardened jaws and body help to avoid wear and lengthen the life of the chuck
- Each chuck supplied with a key

Chuck Model	Capacity	Mount	Code No.
13GH	3/64-1/2"	JT6	536516
16GH	3/64-5/8"	JT3	536520



Super Heavy Duty Ball Bearing Drill Chucks

GS Ball Bearing Chucks are specially designed for HEAVY DUTY drilling applications on production drilling machines, jig borers, milling machines, lathes and radials. The ideal choice for those jobs that require close tolerance drilling. The ball thrust bearing reduces friction in the chuck's closing mechanism, so the operator can apply more gripping power on the twist drill shank.

- High precision, premium tolerance

Chuck Model	Capacity	Mount	Code No.
13BXH	3/64-1/2"	JT6	536500
16BXH	3/64-5/8"	JT3	536502
19BXH	3/64-3/4"	JT4	536504



Yellow Ring Tap & Drill Set

Yellow Ring Spiral Point Taps for tough materials including:

- High Carbon Steel
- Titanium
- High Alloy
- Aluminum

Premium HSS Drills with 135° split points. Comes in a metal case.

Description	Code No.
Taps - 6-32 to 1/2-13 Drills - #36, #29, #25, #21, #7, F, 5/16, U, 27/64	113651
Taps - 6-40 to 1/2-20 Drills - #36, #29, #25, #21, #7, F, 5/16, U, 27/64	113656
Metric Taps - M2.5 to M12 Drills - #46, 40, 33, 30, 19, 9, H, Q	113657



115 Piece Combo Sets



Description	Code No.
3-in-1 Set Contains: #1-#60, A-Z & 1/16"-1/2" x 64ths, HSS	128280
3-in-1 Set Contains: #1-#60, A-Z & 1/16"-1/2" x 64ths, TiAlN Tip	127280

Drill Chuck Arbors



Taper	Jacobs Taper	Code No.	Taper	Jacobs Taper	Code No.
MT1	2	326900	MT4	33	326926
MT2	1	326901	MT5	3	326928
MT2	2	326902	MT5	6	326930
MT2	3	326904	R8	2	326932
MT2	6	326906	R8	3	326934
MT2	33	326908	R8	6	326936
MT3	2	326910	1/2	1	326938
MT3	3	326912	1/2	2	326940
MT3	4	326914	1/2	6	326942
MT3	6	326916	1/2	33	326944
MT3	33	326918	5/8	3	326946
MT4	3	326920	3/4	3	326948
MT4	4	326922	3/4	6	326950
MT4	6	326924			

Drill Chuck Keys

- Nickel thumb grip
- The potential for fracturing under excessive load is limited due to soft steel handles



Chuck Model	Key No.	Code No.	Chuck Model	Key No.	Code No.
13GH 1/2	P6	536548	19GH 3/4	P7	536550
JT33			13BXH	P6	536548
13GH 1/2 JT6	P6	536548	16BXH	P7	536550
16GH 5/8	P7	536550	19BXH	P7	536550

HSS Hand Tap & Drill Sets

High speed steel taps and drills. Comes in a metal case.

Description	Code No.
NC hand taps #6-1/2 NC tap and drill set containing: Taps - 6-32, 8-32, 10-24, 1/4-20, 5/16-18, 3/8-16, 7/16-14, 1/2-13 Drills - #36, #29, #7, F, 5/16, U, 27/64	113650
NF hand taps #6-1/2 NF tap and drill set containing: Taps - 6-40, 8-36, 10-32, 1/4-28, 5/16-24, 3/8-24, 7/16-20, 1/2-20 Drills - #33, #29, #21, #3, #1, Q, 25/64, 29/64	113655



Pink CIMTAP II Tapping Compound



- Material Application: Steels, Cast Iron, Stainless Steel alloys, Nickel alloys, Aluminum, Copper, Brass. Not recommended for magnesium or magnesium alloys.
- Works best at high tapping speeds. Does not leave deposits or hard residues. Easily removed with water.



Size	Code No.
16 oz. Bottle	659730
Case of 12 – 16 oz. Bottles	659731

M1 Oil – All Purpose Lubricant 12 oz. Aerosol Can



Starrett

- Dries to leave a dry-lubricating, surface-protecting film
- Prevents short circuits caused by moisture
- Prevents rust and stops squeaks

Code No.: 629428

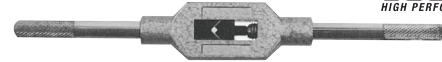
HSS Hand Tap Sets

Includes: 1pc ea. Taper, Plug and Bottoming in a convenient plastic case.



Tap	TPI	Code No.	Tap	TPI	Code No.
6	32	113037	5/16	24	113211
10	24	113049	3/8	16	113133
10	32	113109	3/8	24	113217
12	24	113055	7/16	14	113139
1/4	20	113121	7/16	20	113223
1/4	28	113205	1/2	13	113145
5/16	18	113127	1/2	20	113229

Adjustable Tap Wrench



Tool No.	For DIN Tap Size	For ANSI Tap	Square	Sq. Max	Length (mm)	Code No.
130/0	M1-8 1/16-1/4	M6 1/4	2.0-5.0	0.197	130	113717
130/1.5	M1-12 1/16-1/2 NPT-1/8	M10 3/8	2.1-8.0	0.315	176	113794
130/2	M4-12 5/32-1/2 NPT-1/8	M14 9/16	3.0-9.0	0.354	280	113725
130/3	M5-20 7/32-3/4 NPT-1/8-1/2	M18 3/4	4.9-12	0.472	380	113730
130/4	M11-27 7/16-1" NPT-1/4-3/4	M25 1"	5.5-16	0.630	505	113735
130/5L	M13-32 1/2-1-1/4 NPT-1/4-1	M30 1-1/4	7-20	0.787	700	113740

Adjustable Tap Wrench – 'T' Ratchet Type



Tool No.	For DIN Tap Size	For ANSI Tap	Length (mm)	Square	Sq. Max	Code No.
100/1	M3-10 1/8 - 3/8	M6 1/4	85	2.4-5.5	0.217	113700
100/2	M5-12 7/32 - 1/2	M12 1/2	100	4.5-8.0	0.315	113705
100/10	M3-10 1/8 - 3/8	M6 1/4	250	2.4-5.5	0.217	113710
100/20	M5-12 7/32 - 1/2	M12 1/2	300	4.5-8.0	0.315	113715

Screw Extractor Sets

For removing broken screws, studs, pipe fittings, etc., without damaging the threads



Description	Spiral Flute Code No.	Straight Flute Code No.
5pc set incl. #1, 2, 3, 4, 5	110967	110969
4pc set incl. #6, 7, 8, 9	110968	-
9pc set incl. #1 through 9	110970	-

TOOLING YOUR WORLD.

Sowa has your tooling needs covered.

Retention Knobs
Tool Holding
Collets
Cutting Tools
Measuring & Inspecting
Workholding
Accessories

www.SowaTool.ca

Outside Micrometers

ASIMETO

- Locking clamp
- Carbide tipped measuring faces
- Grey painted steel frame
- Satin chrome finish
- Fitted case
- Ratchet stop for exact and repetitive reading
- With micrometer standard (over 1"/25mm range), calibration certificate, instruction manual



Range	Graduation	Accuracy	Thimble Type	Code No.
Inch				
0-1"	0.001"	±0.0001"	Ratchet	7101011
1-2"	0.001"	±0.0002"	Ratchet	7101021
0-1"	0.0001"	±0.0001"	Ratchet	7101013
1-2"	0.0001"	±0.0002"	Ratchet	7101023
2-3"	0.0001"	±0.0002"	Ratchet	7101033
3-4"	0.0001"	±0.00015"	Ratchet	7101043
4-5"	0.0001"	±0.00015"	Ratchet	7101053
5-6"	0.0001"	±0.00015"	Ratchet	7101063
6-7"	0.0001"	±0.0002"	Ratchet	7101073
7-8"	0.0001"	±0.0002"	Ratchet	7101083
8-9"	0.0001"	±0.0002"	Ratchet	7101093
9-10"	0.0001"	±0.00025"	Ratchet	7101103
10-11"	0.0001"	±0.00025"	Ratchet	7101113
11-12"	0.0001"	±0.00025"	Ratchet	7101123
Metric				
0-25mm	0.001mm	±0.004mm	Ratchet	7101012

Outside Micrometers

STM

- Deluxe heat insulated forged steel frame up to 4"
- Chrome clad
- Complete with standards (2" and up)
- Carbide faces
- Ratchet stop for exact and repetitive reading
- Fitted case

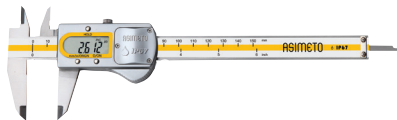


Range	Graduation	Accuracy	Thimble Type	Code No.
Inch				
0-1"	0.0001"	±0.0001"	Ratchet	200570
1-2"	0.0001"	±0.0002"	Ratchet	200572

IP67 Coolant Proof Digital Calipers

ASIMETO

- Absolute function, there is no need to set the zero
- Hold function for easy reading
- Absolute or incremental measuring modes
- Inch/Metric conversion
- Metal Housing, the design will allow the caliper to be used in normal workshop conditions and is resistant to coolant, water, dust or oil
- Auto power on/off, power: 3V lithium battery



Range	Resolution	Accuracy	Code No.
0-6" / 0-150mm	0.0005" / 0.01mm	±0.001"	7305062
0-8" / 0-200mm	0.0005" / 0.01mm	±0.0015"	7305082

Digital Tire Depth Gauge

ASIMETO

- The origin point is retained throughout the life of the battery
- Inch/Metric conversion
- Spherical end anvil



Range	Resolution	Accuracy	Base Length	Code No.
0-1.2" / 0-30mm	0.0005" / 0.01mm	±0.0015" / 0.03mm	60mm	7321010

AGD2 Dial Indicators

ASIMETO

- Dial face dia. 2.20"
- Lug Back
- Easy to read dial face



Range	Grad.	Dial Reading	Range per Rev.	Stem Dia.	Code No.
Inch					
0-0.05"	0.0001"	0-50-0	0.01"	3/8	7402013
0-0.05"	0.0001"	10-0	0.01"	3/8	7402011
0-0.05"	0.0001"	0-5-0	0.01"	3/8	7402015
0-0.25"	0.0005"	0-25-0	0.05"	3/8	7402065
0-0.5"	0.0005"	0-50	0.05"	3/8	7402125
0-1"	0.0005"	0-50	0.05"	3/8	7402265
0-0.25"	0.001"	0-100	0.1"	3/8	7402061
0-0.25"	0.001"	0-50-0	0.1"	3/8	7402063
0-0.5"	0.001"	0-100	0.1"	3/8	7402121
0-0.5"	0.001"	0-50-0	0.1"	3/8	7402123
0-1"	0.001"	0-100	0.1"	3/8	7402261
0-1"	0.001"	0-50-0	0.1"	3/8	7402263
0-2"	0.001"	0-100	0.1"	3/8	7402511

AGD2 Dial Indicators

STM

- Reverse counter
- Stainless steel components
- Rotating bezel with clamp
- Lugback (1/4" hole)
- Interchangeable point

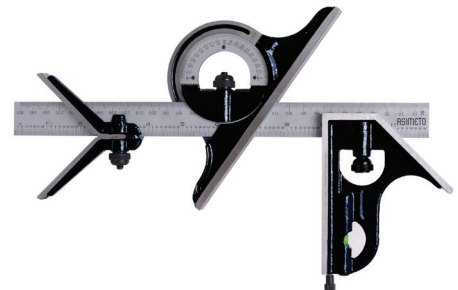


Range	Grad.	Dial Reading	Range per Rev.	Stem Dia.	Code No.
Inch					
0-1"	0.0005"	0-50	0.05"	3/8	200755
0-0.5"	0.001"	0-100	0.1"	3/8	200718
0-1"	0.001"	0-100	0.1"	3/8	200720
0-2"	0.001"	0-100	0.1"	3/8	200725

12" Combination Square Set

ASIMETO

- Graduation: Protractor: 1° Blade: 64ths, 32nds, 1mm, 0.5mm (E/M) 8ths, 16ths, 32nds, 64ths (4R)
- Blade is hardened and tempered
- Heads are hardened cast finish in baked enamel
- 45° Centre Gauge



Description	Blade Length	Code No.
4pc Set (With E/M rule)	12"/300mm	7490208
4pc Set (With 4R rule)	12"/300mm	7490218
Parts		
12" 4R Stainless Steel Rule		7490210
12"/300mm E/M Stainless Steel Rule		7910051
45° Centre Gauge		7490250
Dial Scale Protractor Head		7490260
Square Head		7490270
Lock Nut		7490220

Telescoping Gauges

Plunger is spring loaded and expands within the bore, allowing measurement of the internal diameter



ASIMETO
STM

Range	Depth	Model	Code No.
0.315"-0.500"	4.2"	A	7487011
0.500"-0.748"	4.4"	B	7487021
0.748"-1.26"	4.4"	C	7487031
1.26"-2.126"	5.85"	D	7487041
2.126"-3.54"	5.85"	E	7487051
3.54"-5.90"	5.85"	F	7487061
0.315-5.90" Set of 6		A, B, C, D, E, F	7487869
0.315"-0.500"	12"		7487013
0.500"-0.748"	12"		7487023
0.748"-1.26"	12"		7487033
1.26"-2.126"	12"		7487043
2.126"-3.54"	12"		7487053
3.54"-5.90"	12"		7487063

STM Gauge Set of 6	Code No.
5/16-1/2, 1/2-3/4, 3/4-1-1/4, 1-1/4-2-1/8, 2-1/8-3-1/2, 3-1/2-6	200710

Digital Protractors — Level Type

- This protractor provides an immediate digital reading of any angle in a full circle with 0°-90°-0°-90°-0° readings
- ABS/ZERO button allows two measuring modes, Standard and Alternate Reference
- Four 90° quadrants for display purposes
- HOLD button for freezing a reading in an unreadable position
- V-grooves on top and bottom for use on curved surfaces
- 7490162 comes with a magnetic bottom for easy fixing



ASIMETO

Range	Resolution	Accuracy	Code No.
360°	0.1°	±0.1°	7490160
360°	0.1°	±0.1°	7490162

1-2-3 or 2-4-6 Blocks

- Heat treated and case hardened to 55-60 HRC
- Precision ground and case hardened
- Squareness of all sides is within 0.0001"
- Parallel Accuracy 0.0003"
- Surface finish 6-16 micro inches
- 23 holes-5 are tapped in 3/8-16
- Supplied in pairs



STM

Size	Description	Code No.
1-2-3	23 Holes	230870
2-4-6	23 Holes	230872
1-2-3	No Hole (Pair)	230874

6" Pocket Rule



ASIMETO

Description	Code No.
6" Stainless steel, hardened and tempered, Includes removable pocket clip	7606009

STM Pen Scriber



STM

Description	Code No.
STM Pen Scriber c/w carbide point	201060
Replacement carbide point	201065

5pc Precision Tool Kit

Includes 1 each of the following:

- 6" x 0.0005" Sylvac Digital Caliper (7301060)
- 0.3" x 0.0005" Dial Test Indicator (7501733)
- 1" x 0.001" AGD2 Dial Indicator (7402261)
- 0-1" x 0.0001" Outside Micrometer (7101013)
- Articulating Arm Magnetic Base (7602021)



ASIMETO

Description	Code No.
5pc Precision Tool Kit	7960161

Asimeto Precision Tools Kit



ASIMETO

Description	Code No.
Includes 1 each of the following:	
0-3" 0.0001" outside micrometer set (7101637)	
6" digital caliper (7307065)	
0-1" dial indicator 0.001" (7402261)	
Magnetic base (7601011)	500128
0.0005" x 0.030" dial test indicator (7501733)	
6" pocket rule with Sowa logo (896919)	
Engineers Black Book – Imperial (180151)	

Asimeto Indicator/Mag Base Kit #2



ASIMETO

Description	Code No.
Includes 1 each of the following:	
Type III triple jointed magnetic base (7602031)	500730
0-1" 0.001" AGD2 dial indicator (7402261)	

10pc Solid Carbide Burr Set – Plastic Case



Burrs Included	Double Cut Code No.
SA-41, SC-42, SF-42, SG-44, SE-41, SD-42, SL-42, SH-41, SM-42, SN-42	172980

8pc Solid Carbide Double Cut Burr Sets – Fitted Case



Contents	Shank Diameter	Code No.
SA-51, SB-51, SC-51, SD-1, SD-52, SF-53, SG-51, SL-51	1/8"	172984
SA-3, SA-5, SC-1, SC-3, SD-3, SD-5, SF-3, SF-5	1/4"	172986

"Most Popular" Deburring Set — SP7700



The most popular deburring tools you need to carry for any deburring application. Packed in one handy box.

Contains:

- Countersink NG3100, Mini Scraper NG3700, Noga V Cut NG3200, Adjustable Scraper SC8000, Keyway-Burr NG3300, Internal Scraper NG3710, Super Burr NG3003



Model	Code No.
SP7700	165482

Tool & Die Deburring Set — NX1000



Collected to meet the total requirements of Tool and Die makers.

Contains:

- Keyway burr; half round riffler file; round riffler file; flat riffler file; double-burr; D-key; uni-handle plus SN holder; C holder plus C20; C12; D holder plus D50; D holder plus D66; T120 scraper; L holder plus L1; N1 blade; S10 blade; S101 B blade; S20 blade



Model	Code No.
NX1000	165160



Deburring Sets



Model	Application	Contains	Code No.
Promo N Set – NG8000	Steel, Aluminum & Plastic	Noga Grip 2 handle & 10pcs N1 (B10) blades	165474
Promo S Noga Set – NG8150	Steel, Aluminum & Plastic	Noga Grip 1 handle & 10pcs S10 (E100) blades	165464
N Economy Set – NG8050	Steel, Aluminum & Plastic	Noga Grip handle & 20pcs N1 (B10) blades	165478
N Cobalt Set – NG8100	Plastic & Hard Materials	Noga Grip 2 handle & 20pcs N10 (B10) Cobalt blades	165466
S Golden Set TiN Coated – NG8152	Abrasive Materials	Noga Grip 1 handle & 10pcs S10 TiN Coated blades	165460
N Golden Set TiN Coated – NG8002	Steel, Aluminum & Plastic	Noga Grip Handle 10 N1 TiN Coated blades	165465
B10 Set – SG6000	Steel, Aluminum & Plastic	Noga Grip 2 Handle & 20pcs B10 blades	165300
NB Set – NB1900	Steel, Aluminum & Plastic	NB Handle, 10pcs S10 blades	165060
B10 Set – SG6000	Steel, Aluminum & Plastic	Noga Grip 2 Handle & 20pcs B10 blades	165300

10 Piece Needle File Set

- Used for deburring, shaping and finishing
- Used for fine detailing or finishing



Description	Code No.
10 Piece Needle File Set	200761

Aluminum Oxide Resin Cloth Belts

- Grind and finish surfaces
- Applications: Wood and Metal



Size	Grit	Code No.
4 x 36	36	520298

10 Piece Diamond File Set

- Used for precision filing and shaping
- Electroplated with a diamond abrasive
- Highly durable when used on harder materials
- Excellent for material removal



Description	Code No.
10 Piece Diamond File Set	200763

Abrasive Cloths CS 310 X

- Bonding Agent: Resin
- Aluminium Oxide
- Coating: Close
- Backing: "X" - Cotton Cloth, Heavy
- Applications: Metal



Width x Length	Grit	Code No.
2" x 48	220	920186
6" x 48	40	920216
6" X 48	220	920223

General Purpose Grinding Wheels



Dark Regular Aluminum Oxide



Green Silicone Carbide



Open Bond White Aluminum Oxide

A: Dark Regular Aluminum Oxide

Dimensions	A30P	A54N	A80N
6x3/4x1	635202*	635204	635206
6x1x1	635208	635210	635212
7x1x1	635220	635222	-
8x3/4x1	635226	635228	-
8x1x1	635232	635234	-
10x1x1	635238	635240	-
10x1-1/2x1-1/4	635250	635252	-
10x2x1-1/4	635256	635258	-
12x1-1/2x1-1/4	635262*	635264	-
12x2x1-1/4	635268	635270	-

* A36P

32A: Open Bond White Aluminum Oxide

Dimensions	32A46J	32A60J
7x1/2x1-1/4	635420	635422
8x3/4x1-1/4	635428	635430
8x1x1-1/4	635432	635434
10x1x3	635436	-
14x1x5	635443	635444
14x1-1/2x5	635445	-

GC: Green Silicone Carbide

Dimensions	GC60KV	GC80JV	GC100J	GC120JV
6x3/4x1	635450	635452	635454	-
6x1x1	635458	635460	635462	-
7x1x1	635480	635482	-	-
7x1/2x1-1/4	635466	635468	-	635472
8x3/4x1	-	635490	-	635492
8x1x1	635494	635496	635498	635500
10x1x1	635502	-	-	-
10x1-1/2x1-1/4	-	635510	-	-
10x2x1-1/4	-	635516	-	-

Files

General purpose metal files with handles

Description	Code No.
8" (20cm) Flat File	909411
8" (20cm) Half-Round File	909412



Air Micro Die Grinder

- Contains:
- 10pcs 1/8" (3 mm) grinding stones
 - 1pc TP-501-1 Grinder
 - 2pcs spanners
 - 1pc 3 mm collet
 - 1pc blow case

Description	Code No.
1/8" die grinder kit	174002



Air Blow Gun

- Recommended air pressure: 75-120 psi
- Max 150 psi
- Air inlet: 1/4"

Model No.	Nozzle Length	Code No.
BG2504	4"	174068
BG25013	13"	174070



3" Double Thick Flat Chip Brush

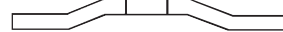
- Bristle Length (Inch): 2"
- Brush Width (Inch): 3"
- Handle Material: Wood

Code No.: 505017



Reinforced Depressed Centre Discs For Steel

- A. (Type 27)
- Approved by CNS standard No. 2551
 - German DSA standard No. 2335



Dimensions	Specification	RPM	Code No.
4 x1/8 x5/8	A24R2G	15300	635600
4 x1/8 x5/8	A24S2G	15300	635602
4 x1/4 x5/8	A24R2G	15300	635604
4 x1/4 x5/8	A24S2G	15300	635606
4-1/2 x1/8 x7/8	A24R2G	13300	635608
4-1/2 x1/8 x7/8	A24S2G	13300	635610
4-1/2 x1/4 x7/8	A24R2G	13300	635616
5 x1/4 x7/8	A24R2G	12200	635620
7 x1/8 x7/8	A24R2G	8500	635622
7 x1/8 x7/8	A24S2G	8500	635624
7 x1/4 x7/8	A24R2.5G	8500	635628
7 x1/4 x7/8	A24S2.5G	8500	635629

Cut-Off Wheels For Steel



Dimensions	Specification	RPM	Code No.
12 x1/8 x1	A30RBF2G	5000	635694
12 x1/8 x1	A30RBF1G	4500	635696
12 x1/8 x1	A30RBF2G	6300	635697
12 x1/8 x20mm	A30RBF2.5G	6300	635700
14 x1/8 x1	A30RBF2G	4300	635702
16 x1/8 x1	A24SBF2G	3800	635708

Tap & Drill Wall Reference Chart

- Size: 2' x 3'
- Code No.: WC2019H

SOWA 518.748.5750
1.800.265.8221
METALWORKING SOLUTIONS
www.sowatool.com

Tap & Drill Pocket Reference Chart

- Size: 3.5" x 7"
- 2-sided
- Code No.: POCKET

SOWA TAP DRILL SIZES

Tap Size	Drill Size	Tap Size	Drill Size
1/16"	1/32"	1/8"	3/32"
1/8"	1/16"	3/16"	5/32"
3/16"	1/8"	1/2"	9/32"
1/2"	1/2"	1 1/2"	1 1/2"

DECIMAL EQUIVALENTS

Tap Size	Drill Size	Tap Size	Drill Size
1/16"	1/32"	1/8"	3/32"
1/8"	1/16"	3/16"	5/32"
3/16"	1/8"	1/2"	9/32"
1/2"	1/2"	1 1/2"	1 1/2"

TAP DRILL SIZES

Tap Size	Drill Size	Tap Size	Drill Size
1/16"	1/32"	1/8"	3/32"
1/8"	1/16"	3/16"	5/32"
3/16"	1/8"	1/2"	9/32"
1/2"	1/2"	1 1/2"	1 1/2"



7pc Nut Driver Set

Set contents sizes:

- 3/16", 1/4", 5/16", 11/32", 3/8", 7/16", 1/2"



Description	Code No.
7pc Nut Driver Set, Range (inch): 3/16" - 1/2"	505013

Ball Driver Hex Key – 10pc Sets

Chrome vanadium



Description	Code No.
10pc Imperial Ball End Hex Key Set	909284
10pc Metric Ball End Hex Key Set	909285

Long Nose Pliers

- Machined jaws and cutting edges
- HD carbon steel
- Micro-chrome finish
- Ergonomic molded anti-slip grip handles



Description	Code No.
6" (15cm) Long Nose Pliers	913013

5pc Plier Set — Comfort Handle

Set contents:

- 8" Linesman Pliers
- 7" Diagonal Cutting Pliers
- 8" Long Nose Pliers
- 8" Bent Nose Pliers
- 8" Slip Joint Pliers
- Plastic Tray



Description	Dynamic EDP	Code No.
5pc Plier Set	D055201	865961

Diagonal Cutting Pliers — Comfort Handle

- Meets ANSI standards
- Drop forged and specially heat treated for maximum durability
- Satin chrome finish with cushion-grip handle



Overall Length	Jaw Length	Jaw Thickness	Dynamic EDP	Code No.
6"	1.00"	0.43"	D055038	866918
7"	1.00"	0.43"	D055000	865886

Long Nose Pliers — Comfort Handle

- Meets ANSI standards
- Satin chrome finish with cushion-grip handle
- Drop forged and specially heat treated for maximum durability



Overall Length	Jaw Length	Jaw Thickness	Dynamic EDP	Code No.
6"	1.93"	0.35"	D055001	865979
8"	2.99"	0.37"	D055002	866381
11"	3.23"	0.39"	D055003	866921

25lb Bag of Coloured Cotton Wiping Rags



- Material: Cotton
- Virgin or Reclaimed: Made from 100% recycled materials
- Each bag is 25lbs. freight costs will be reflective
- Colour: Mixed

Code No.: 891527

Mini Pistol Grease Gun

One hand pistol grip grease gun with convenient pull type operating mechanism

- Capacity: 3oz cartridge
- 3,500 psi
- Zinc plated finish
- Complete with 4" steel extension



Model	Code No.
G-16/ZN/N	231382

Heavy Duty Lever Grease Gun

Top of the line grease gun designed for heavy industrial applications.

- Capacity: 14oz cartridge
- 10,000 psi
- Variable stroke feature
- High tolerance aluminum die cast head
- Complete with 6" steel extension



Model	Code No.
G1R/HD/N	231380

General-Purpose Lithium Grease Cartridge

- A high-purity, NLGI Grade 2, lithium-based grease
- Provides superior lubrication & durability in any weather and most temperatures
- A versatile grease designed for light-duty applications requiring a long grease life
- Will not break down or run out



Code No.: 917992

80pc SAE Grease Fitting Assortment

Contents:

- 1/8"-27 PTF - 25pcs straight, 10pcs 45°, 10pcs 90°
- 1/4"-28 SAE-LT - 15pcs straight, 10pcs 45°, 10pcs 90°

Model	Code No.
GFT/KIT/SAE-80	231386



Lever Type Oil Cans

This series of oil cans have a modern and contemporary design with a dome shaped body. Most popularly used oil can style all over the world. Manufactured with a steel pump, powder coated red body, and a flexible wire braided extension.



Model	Capacity	Spout Length	Code No.
MP21F	200 ml	6"	231392
MP22F	300 ml	6"	231394
MP23F	500 ml	7"	231396

1" x 26' (8m) Exact Pocket Tape Measure

- Graduation Style: in/cm
- Belt Clip: Yes



Description	Code No.
1" x 26' (8m) Exact Pocket Tape Measure	634396

Automatic Centre Punches

- Automatic, spring operated action
- Adjustable for very light to heavy strokes
- Replaceable point ground and hardened
- Used for marking, punching, staking and riveting



Model No.	Description	Code No.
P170	Standard duty	606300
P171	Heavy duty	606302
P171-P	Replacement point	606304

Automatic Centre Punch

- Automatic, spring operated action
- Used for marking, punching, staking, and riveting
- 120mm length



Model	Code No.
VACP-1	326290

14pc Punch & Chisel Set

Contents:

- 5 Octagonal Cold Chisels, 3/8, 1/2, 5/8, 3/4, 7/8
- 2 H D Centre Punches 5/32, 1/4
- 3 H D Pin Punches 1/16, 1/8, 3/16
- 2 H D Drift Punches 1/8, 5/32
- 2 H D Starting Punches 5/16, 1/8



Model No.	Code No.
KIT/14	606655

Transfer Punch Set

28 Punches

- Heat treated tempered steel
- Consists of one each of punch sizes 3/32 through 1/2 x 64th plus 17/32



Description	Code No.
3/32 through 1/2 x 64th plus 17/32	200750

Letter & Number Stamp Sets

High quality steel punches are through induction hardened, which gives durability and extended life even after repeated use. The hardness at the stamping end is maintained at 58-62 HRC, the striking end is tempered to 38-43 HRC.

Stamp Size	27pc A - Z plus "&" stamp Code No.	9pc #0-9 Code No.
1/8	606615	606600
3/16	606620	606605
1/4	606625	606610



Ball-Pein Hammer

- 12oz
- Fiberglass Handle



Description	Code No.
12oz Ball-Pein Hammer with Fiberglass Handle	705193
16oz Ball-Pein Hammer with Fiberglass Handle	909276

Indestructible Handle Hammers

Made with spring steel bars that run all the way through the handle. Bars are locked with the hammer head using steel locking plates ensuring that the head never gets dislodged

- Ergonomic rubber grip handle
- Hammer head is forged from special steel and is induction case hardened to 52-56 HRC for extended life



Style	Head Weight	Handle Length	Model	Code No.
Club	4 lb	12"	CHID/4/12	231468
Ball Pein	32 oz	14"	BPID/32/14	231472

Polyurethane Hammers

- Steel structure containing steel shot
- Main body made from polyurethane resin, the handle from soft quality TPR



Model	Head Diameter (mm)	Head Width (mm)	Overall Length (mm)	Weight (kg)	Code No.
VHM-38	38	100	287	0.49	231460
VHM-46	46	100	306	0.69	231462
VHM-50	50	110	340	0.93	231464
VHM-56	56	120	353	1.16	231466

Dead Blow Hammers

Description	Code No.
CH-0 Dead Blow Hammer	174134
CH-1 Dead Blow Hammer	174136
CH-2 Dead Blow Hammer	174138
CH-3 Dead Blow Hammer	174140
CH-4 Dead Blow Hammer	174142
CH-5 Dead Blow Hammer	174144
CH-36 Dead Blow Hammer	174146



Dead Blow Rubber Hammer

- 2lb
- Steel Handle

Description	Code No.
2lb Dead Blow Rubber Hammer	909277



ABS Plastic Tool Boxes



Dimensions (mm)	Number of Trays	Code No.
420W x 235D x 180H	2 levered trays	326546
378W x 182D x 144H	1 removable tray	326547
533W x 266D x 216H	1 removable tray	909392

Polyester Slings

Heavy-duty polyester, 2-ply flat eye or endless sling constructions.



Description	Code No.	Description	Code No.
1" x 6' Endless Sling	904458	2" x 4' Flat Eye Web Sling	917770
1" x 2' Flat Eye Web Sling	904008	2" x 6' Flat Eye Web Sling	917772
1" x 3' Flat Eye Web Sling	910105	3" x 12' Flat Eye Web Sling	909946
1" x 10' Flat Eye Web Sling	917771	3" x 20' Flat Eye Web Sling	904015

12" Hacksaw

A rugged heavy-duty industrial quality hacksaw designed for the professional.

- Strong aluminum die cast handle
- Guarded grip design
- Comes complete with a 12" chrome steel hacksaw blade



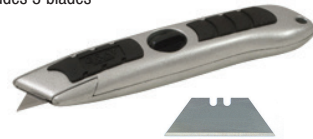
Model	Overall Length	Bow Depth	Code No.
HF/12/BC	17-5/16"	4"	231370

Screw-Lock Utility Knife

- Heavy duty utility knife
- Handle stores extra blades
- Easy to remove and install blades
- Comfort grip handle
- Includes 3 blades



Description	Code No.
Screw-Lock Utility Knife	865638
Replacement Blades (pkg. 5)	865692



Pin Vises & Set

- Made of alloy steel, black oxide finish
- Collets grip firmly when chuck is tightened
- Knurled finger grip
- Range of set 0 - 0.188"
- Supplied in plastic pouch
- Ideal for holding small tools, rods, wires, taps, etc.



Model No.	Description	Code No.
6000-004	4pc Pin Vise Set	606228
6000-004A	0.000-0.040 Pin Vise	606230
6000-004B	0.032-0.059 Pin Vise	606232
6000-004C	0.052-0.122 Pin Vise	606234
6000-004D	0.118-0.188 Pin Vise	606236

Heavy Duty Bench Vises With Swivel

Manufactured from high quality grey iron castings - a very strong material with excellent shock absorbing capacity and immense strength under compression. These rigid and robust vises, machined to close tolerances, are designed for smooth operation and reliability.



Jaw Width	Max. Jaw Opening	Throat Depth	Code No.
4"	127mm	55mm	231400
6"	178mm	80mm	231410

Drill Press Vises

- High tensile iron casting
- Cold rolled screw thread
- Plain jaws of special steel

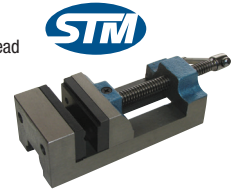
Jaw Width	Opening	Jaw Depth	Weight (lb)	Code No.
3"	3"	1-1/8"	6	370206
4"	4"	1-3/8"	10	370211
5"	5"	1-1/2"	17-1/2	370216
6"	6"	1-1/2"	23	370221



Drill Press Vises P350 & P400

- Rugged 3 inch and 4 inch
- Precision cut ACME thread screw
- Hexagonal screw head for tight clamping

Jaw Width	Jaw Depth	Opening	Length	Weight (lb)	Code No.
3"	1-3/4"	3"	9-1/4"	9-3/4	370236
4"	1-3/4"	4"	10-3/4"	17	370241



"G" Clamps

- SG iron with a tensile strength over 60,000 psi
- Powder coated finish
- Swiveling pad
- Handle designed to bend before the frame can be overstressed

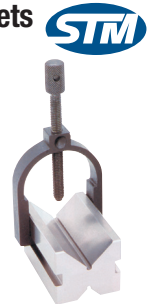
Model	Clamp Capacity	Throat Depth	Load Capacity	Code No.
GCL/13D/100	4"	2-11/32"	1200 lb	231442
GCL/13D/150	6"	3"	1400 lb	231443
GCL/13D/200	8"	3-1/8"	1700 lb	231444



Tool Maker's Precision V-Block & Clamp Sets

This range of Vee blocks is made from finely selected tool steel fully hardened to 55-60 HRC. Manufactured and numbered in matched pairs, each pair has two 90° Vees of different capacities which are identical to the Vees of its matching block. The Vee's are ground central, parallel and square with the ends and sides.

Block Length	Block Width	Block Height	Type	Model No.	Code No.
1-19/32"	1-1/4"	1-1/4"	Regular	VB/SP/T-30	231072
2"	1-1/2"	1-1/2"	Regular	VB/SP/T-35	231074
2-3/4"	1-3/4"	1-5/8"	Regular	VB/SP/T-70	231076



Unigrip Drill Press Vises

- Graded cast iron with a precision ground base and vise bed for smooth lateral movement of the movable jaw.
- Longitudinal and transversal prisms in the fixed jaw allow for firm gripping of round jobs of different sizes both horizontally and vertically. Special seat in jaws facilitates retaining of flat workpieces.
- Unigrip mechanism increases the scope of application. Spindle moves inside the hollow hand grip allowing the vise to be used at a location away from the table edge.
- 3 mounting options via 2 additional precisely ground surfaces: end face and side face. This allows for drilling along all axes with a single setting of the job and holding of long workpieces which are difficult to manage in regular vises.

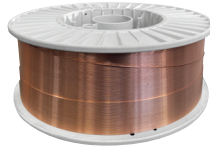
Model No.	Jaw Width	Opening	Jaw Depth	Code No.
DPV/UG-100	4"	3-1/2"	13/16"	370930



Super MIC 70 Premium Copper Coated Welding Wire



- Premium welding wire
- Contains high levels of manganese and silicon
- Industry Specification: ER70S6
- Wire Diameter (Decimal Inch): 0.035"
- Roll Weight (Lb.): 44
- Material: Copper Coated



Code No.: 915582

Welders' Beanie

- Breathable, flame resistant, 100% cotton fabric
- Added protection under welding helmet
- Black and white, 2-colour design
- One size fits all



Code No.: 3001328

Welders' Standard Quality Gloves

- Rugged split cowhide leather construction
- Excellent abrasion resistance
- Full thermal cotton lining provides added heat protection
- Weltd seams at all critical points
- Case Qty: 72



Description	Size	Code No.
Glove	Large	910267
One-finger mitt	Large	3001381

Flip Front Welding Helmet

- Lightweight design with ratchet headgear
- Comes complete with shade 10 lens
- 2" x 4 1/4" flip front window
- Passive lens
- Material: Thermoplastic



Code No.: 895859

Air Carbon Arc Gouging Electrodes

- Consistent copper coating DCCC
- Used for gouging out defective welds and cutting non-ferrous metals
- Electrodes are 12" in length



Dia.	Qty/Pkg.	Code No.
1/4"	50	3001401
5/16"	50	3001393

Fast Drill Sharpeners



Patented Features

- Double-bearing grinding unit (reduces wear)
- Drill tightening design with bearing device
- Adjustable trimming angle



326130



326134

Model:	DM213 Fast Drill Sharpener 13mm Capacity	DM1226 Fast Drill Sharpener 30mm Capacity
Code No.:	326130	326134
Drill Diameter:	Ø2mm - Ø13mm	Ø8mm - Ø30mm
Point Angle:	85° ~ 140°	85° ~ 140°
Power Supply:	AC110/AC220 50/60HZ	AC110 / AC220 50/60HZ
Motor:	90W	450W
RPM:	6000rpm	4000rpm
Weight:	10 kg	25 kg
Standard Accessories:	<ul style="list-style-type: none"> • ER20 Collets, ranged from 2.0mm-13mm (12pcs) • CBN wheel #200x1pc (for High Speed drill) • 4mm and 5mm Hexagon (Hex.) wrench x 1pc each 	<ul style="list-style-type: none"> • ER40 Collets, ranged from 12mm-26mm (15pcs) • Optional Collets 8~11mm, 27~30mm • CBN wheel #200x1pcs (for High Speed drill) • 4mm and 6mm Hexagon (Hex.) wrench x 1pc each

From Headstock to Tailstock

TOOLING YOUR WORLD.

Sowa has your tooling needs covered.

Workholding
Indexable Cutting Tools
Tool Holding
Measuring & Inspecting
Accessories

www.SowaTool.ca

SOWA's complete line of metalworking solutions



Sowa Tool's premium brand delivers top-tier quality and performance that rivals or exceeds the best in the world. These products offer premium features and dependability, at shockingly affordable prices, making them an ideal choice for applications where accuracy and speed matter most.

ASIMETO

Sowa's family of metrology solutions deliver absolute confidence born from its European engineering, and each tool beginning its journey in our ISO 17025 accredited labs. This premium heritage product priced at a non-premium price, delivers significant value for your money.



With our Sowa branded tools, we bring to our customers high performance cutting tools engineered to deliver superior tool life, machining efficiency & quality while still offering maximum value for your money.

SKODA

Sowa Tool's exclusive line of general-purpose live centres with its roots in European quality that deliver excellent accuracy, rigidity, and durability at a price point that suits most budgets. Sowa carries a wide range of in-stock standard models to suit most common turning applications.



Sowa Tool's exclusive line of European universal boring and facing heads offer superior accuracy and precision for all your facing and boring applications. They feature an easy-to-adjust design, durable castings, and precision spindle bearings for a consistently accurate finish.



Our approach to this brand ensures that our customers receive the best value for their investment by delivering a broad assortment of cutting tools at an exceptional value. These tools typically apply to less demanding applications seen on the standard shop floor where the cost of the tool has the greatest influence on the selection process.



At Sowa Tool & Machine

we understand the needs of machining processes, and our extensive product lines offer a comprehensive solution. Our goal is to provide customers with the cost benefits of a single-source supplier, while remaining committed to delivering the highest quality products.

Ask for them by name!



Sowa Tool & Machine Co. Ltd.

Canadian Headquarters
500 Manitou Drive, Kitchener, ON, N2C 1L3
US Headquarters
101-137 Overhill Drive, Mooresville, NC 28117

Shop Online:

www.**SowaTool**.ca

sales@sowatool.com
TF: 1-800-265-8221