



TOOLING
YOUR
WORLD.



One Stop Shopping

Save Time & Money

- Vendor and purchase order reduction
- Fewer calls and emails
- One website and team you can trust
- Special promos and incentives
- Rebate programs
- Freight savings
- Stocking strategies

From Spindle to Table 2-4

From Headstock to Tailstock 5-6

From Inspection to Certification 7-9

For all your Shop's needs 10-11

We've got you covered!

Sowa Tool has your rotary machining needs covered.

SKUs shown are a small selection of our product offering. Visit our Webstore for our complete line card.



WEBSTORE



DOWNLOAD CENTER

Small sample selection only!

Retention Knobs

CAT40 GSC470X15	366034	CAT40 GSC532X45	366058
CAT40 GSC474	366038	CAT50 GSC275X45	366096
CAT40 GSC475	366040	CAT50 GS536X45	366098
CAT40 GS532X45	366050	CAT50 GSC536X45	366104

A fit for every machine. Other sizes available.



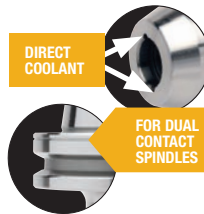
Tool Holding

End Mill Holders

CAT40/50, BT30/40/50, HSK63A/100A, NMTB40/50, R8, Straight Shanks, Blank Bars

CAT40 1/8 x 2.50	531070	CAT40 3/4 x 3.00	531042
CAT40 1/4 x 2.50	531002	CAT40 1 x 2.00	531054
CAT40 3/8 x 2.50	531014	CAT40 1-1/4 2.00	531060
CAT40 1/2 x 2.50	531026	CAT50 1 x 4.00	531154

Dual Contact and Direct Coolant options available.



Collet Chucks

CAT40/50, BT30/40/50, HSK63A/HSK100A, NMTB40/50, R8, ER Extensions



CAT40 ER11 6.00	531404	CAT40 ER32 4.00	531423
CAT40 ER16 4.00	531405	CAT40 ER32 3.13	531424
CAT40 ER16 2.5	531406	CAT40 ER40 2.50	531427
CAT40 ER16 3.50	531408	CAT50 ER32 4.00	531454
CAT40 ER20 2.50	531412		
CAT40 ER20 4.00	531414		
CAT40 ER25 2.50	531418		
CAT40 ER32 2.50	531421		

Dual Contact options available.

Collets

ER, TG, DA, Milling, Type 25/32, 5C, R8, Emergency

Individual collets and sets available in inch and metric versions.



ER11 Inch 7pc Standard Collet Set	1/16-1/4 x 1/32	337401
ER16 Inch 11pc Standard Collet Set	1/16-3/8 x 1/32	337403
ER20 Inch 15pc Standard Collet Set	1/16-1/2 x 1/32	337404
ER25 Inch 17pc Standard Collet Set	1/8-5/8 x 1/32	337405
ER32 Inch 21pc Standard Collet Set	1/8-3/4 x 1/32	337407
ER40 Inch 29pc Standard Collet Set	1/8-1 x 1/32	337409

Drill Chucks

CAT40/50, BT, NMTB, Morse Taper, R8, Straight Shank, Replacements, Ball Bearing, Super Precision



CAT40 1/4 Integral Keyless	531480	13GH 3/64-1/2 JT6 Plain Bearing	536516
CAT40 1/2 Integral Keyless	531482	16GH 3/64-5/8 JT3 Plain Bearing	536520
CAT40 5/8 Integral Keyless	531483	13BXH 3/64-1/2 JT6 Heavy Ball Bearing	536500
CAT50 1/2 Integral Keyless	531484	16BXH 3/64-5/8 JT3 Heavy Ball Bearing	536502
CAT50 5/8 Integral Keyless	531485	19BXH 3/64-3/4 JT4 Heavy Ball Bearing	536504

Shrink Fit Holders

CAT40/50, BT30/40, HSK63A/100A



CAT40 1/4 x 3.15	541842	CAT40 1 x 3.94	541866
CAT40 3/8 x 3.15	541850	CAT40 1-1/4 x 3.94	541870
CAT40 1/2 x 3.15	541854	CAT50 3/8 x 3.15	541940
CAT40 3/4 x 3.15	541862	CAT50 3/4 x 3.15	541952



Don't just shrink fit, **Shrink SMART** with GS Tooling's newest Shrink Fit machine! **541650**



Explore our wide range of rotary tooling systems.

End Mill Holders • Collet Chucks & Collets • Shell Mill & Face Mill Holders
Shrink Fit Holders • Tap Holders • Driven Tooling • Angle Heads



Cutting Tools

For all options and specs visit our Webstore.

HSS & HSCO End Mills

Types: Weldon Flat – Square End, Ball Nose, Double End, Tapered, Fine Pitch & Roughing
Lengths: From Stub to Extra Long, Mini and Extended Shank
Finishes: Uncoated for Aluminum, Uncoated, TiAlN
Flutes: From 2-8 Flutes



Sets:
103574
103581
More available online.



Niagara Cutter CLEVELAND

Square End

2-Flute, 30° Helix

	HSCO	HSCO TiAlN	HSS
1/4"	103058	104572	104458
3/8"	103066	104574	104466
1/2"	103074	104576	104474
5/8"	103082	104577	104478
3/4"	103090	104578	104482

2-Flute, 42° Helix, HSS for Aluminum

	HSS
1/4"	103506
3/8"	103508
1/2"	103510
5/8"	103511
3/4"	103512

3-Flute, 60° Helix

	HSCO
1/4"	103538
3/8"	103540
1/2"	103542
5/8"	103543
3/4"	103544

4-Flute, 30° Helix

	HSCO	HSCO TiAlN	HSS
1/4"	103226	104526	104408
3/8"	103230	104530	104416
1/2"	103235	104535	104422
5/8"	103240	104540	104426
3/4"	103246	104546	104430

Ball Nose

4-Flute, 42° Helix, HSS for Aluminum

	HSCO
1/4"	104954
3/8"	104958
1/2"	104962
5/8"	104964
3/4"	104968

Roughing

3 & 4-Flute Roughing 30° Helix

	HSCO	HSCO TiAlN
1/4"	103900	104500
3/8"	103902	104502
1/2"	103903	104503
5/8"	103904	104504
3/4"	103905	104505

Carbide End Mills

Types: Square End, Corner Radius, Ball Nose & Roughing
Lengths: From Stub to Extra Long
Finishes: Uncoated for Aluminum, TiCN for Aluminum, Uncoated, TiAlN, AlTiN
Flutes: From 2-8 Flutes



Sets:
103846
102957
103847
More available online.



Niagara Cutter CLEVELAND



Square End Carbide For Aluminum

2-Flute, 40° Helix

	Uncoated
1/4"	101020
3/8"	101028
1/2"	101032
5/8"	101036
3/4"	101040

3-Flute, 40° Helix

	Uncoated	TiCN
1/4"	153324	153374
3/8"	153332	153382
1/2"	153336	153386
5/8"	153340	153390
3/4"	153344	153394

Square End Carbide End Mills

2-Flute, 30° Helix

	Uncoated	TiAlN	AlTiN
1/4"	103854	102810	104608
3/8"	103857	102814	104616
1/2"	103859	102818	104620
5/8"	103887	102822	104624
3/4"	103889	102826	104628

3-Flute, 30° Helix

	Uncoated	TiAlN
1/4"	101092	102371
3/8"	101097	102381
1/2"	101099	102384
5/8"	101101	102386
3/4"	101103	102388

4-Flute, 30° Helix

	Uncoated	TiAlN	AlTiN
1/4"	103864	102840	104708
3/8"	103867	102844	104716
1/2"	103869	102848	104720
5/8"	103934	102852	104724
3/4"	103936	102856	104728

Drills



HSS TiAlN Tip Jobber Drills



Thousands of other Drill options can be found on our Webstore.

1/8"	127005	1/4"	127013
5/32"	127007	5/16"	127017
3/16"	127009	3/8"	127021
7/32"	127011	1/2"	127029

29 Piece Fractional Sets

Other Wire, Fractional and Letter sets available.

1/16"-1/2" x 64ths, HSS	128119
1/16"-1/2" x 64ths, Black/Gold	105380
1/16"-1/2" x 64ths, TiAlN Tip	127050

Yellow Ring Taps

Yellow, Orange and Green Ring available. For full range and all specs visit our Webstore.



Spiral Point

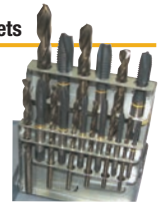
1/4"-20	123308
3/8"-16	123312
1/2"-13	123316
5/8"-11	123318
3/4"-10	123320

Spiral Flute

1/4"-20	123372
3/8"-16	123376
1/2"-13	123380
5/8"-11	123452
3/4"-10	123454

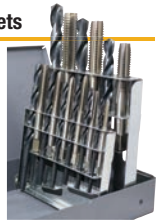
Yellow Ring Tap & Drill Sets

113651
113656
113657



HSS Hand Tap & Drill Sets

113650
113655



Workholding

Milling Machine Vises

A wide variety of sizes for all applications. More sizes available.



GS160G
6" Vise
327320



4" & 6"
Double Clamp Vises
382610 & 382600

Machinist Clamping Kits

Multiple options and replacement pieces available.



333550

Bench & Drill Press Vises

Other vise styles and sizes available.



4" & 6"
231400 & 231410
3", 4", 5" & 6"
370206, 370211,
370216 & 370221



Clamps & Accessories

750	604040
1000	604041

More sizes & styles available.



Accessories

Drill Sharpeners



326134
326130



NC/CNC Tool Trolley Cart



Replacement trays also available.

40 Taper
326985
50 Taper
326995



Coolant Hoses & Valves

665456



Total control units, assembly pliers, shields and bases available.



Tool Holder Setting Stands



Other sizes available.



40 Taper - Simple
335210

40 Taper - Deluxe
335250

Fluids, Coolants & Pastes

Other sizes available.



659730
907701
906774





Sowa Tool has your turning needs covered.

SKUs shown are a small selection of our product offering. Visit our Webstore for our complete line card.



WEBSTORE



DOWNLOAD CENTER

Small sample selection only!

Workholding

Scroll Chucks

Fine adjustment scroll chucks, self centering scroll chucks, independent lathe chucks and power chucks, all available on our Webstore.

Chuck Size	STM	Bison
3	4440504	-
4	4440505	-
5	4440510	440705
6	4440515	440710
8	4440520	440715
10	4440525	440720
12	4440530	440725



Soft & Hard Jaws

Other parts such as jaws, wrenches, sleeves, pinions, scrolls, rings, etc. can be found on our Webstore.



Chuck Diameter	3-Jaw	6-Jaw
5	465105	-
6	465110	467532
8	465115	467534
10	465120	467536
12	465125	467538
16	465130	467540
20	465135	-
25	465140	-

Live Centres

Other options available. See all specs on www.SowaTool.ca



Morse Taper	GS Tooling	SKODA	STM
1	-	310105	-
2	311011	310110	320110
3	311012	310115	320115
4	311013	310120	320120
5	311014	310125	320125
6	311015	310130	-



Carbide Tipped Dead Lathe Centres



Morse Taper	STM
1	420905
2	420910
3	420915
4	420920
5	420925
6	420930

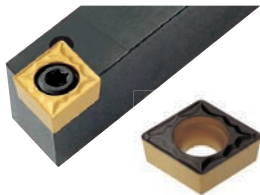
Indexable Cutting Tools

Thousands more inserts and holders, including kit options available on our Webstore. Full specs and inventory can be found online.

Turning



CCMT 32.51-F2P PT25C Carbide Insert	149220
SCACR 08-3K External Turning Toolholder	146327
SCACL 08-3K External Turning Toolholder	145993



Threading



ECTR 300 8-28 Carbide Threading Insert	146597
ETH3 3/4" External Threading Holder	146708
ETH3 1" External Threading Holder	146290



Facing



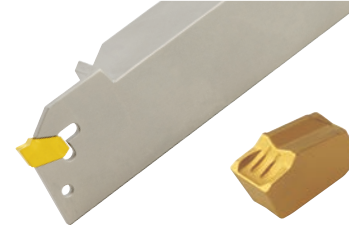
CNMG 432-M PT25C Carbide Insert	149231
MCKNR 16-4D External Facing Toolholder	145820
MCKNL 16-4D External Facing Toolholder	145821



Part-Off



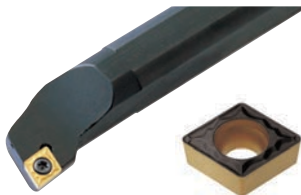
SP 300 PT30C Carbide Part-Off Insert	146452
PT-INT 075-3 Pro Part-Off Integral Shank Holder	147433
PT-INT 100-3 Pro Part-Off Integral Shank Holder	148231



Boring



CCMT 32.51-F2P PT25C Carbide Insert	149220
S10R-SCLCR 3 Boring Bar	145925
S12S-SCLCR 3 Boring Bar	145926
S12S-SCLCL 3 Boring Bar	145929
S16T-SCLCR 3 Boring Bar	145927



Drilling



N9MT11T3CT2T-NC40 Insert, TiN Coating	612040
N9MT11T3CT2T-NC10 Insert, TiAlN Coating	612042
16mm NC Spotting Drill	612526
1/2" NC Spotting Drill	612528
5/8" NC Spotting Drill	612530



Milling



APXT 11T3 PDSR-M PM25C Carbide Insert	146356	<i>End Mills, Face Mills and Shell Mills</i>
AP 11 - 90° End Mills	0.1875 146371 2075S 146373	
Short Length	2100S 1" Shank 148414	
AP 11 - 90° End Mills Long Length	2062L 147284 2100L 147286	



Engraving



V06006T1W06-NC2071 Insert, TiN Coating	612576
V06006T1W06-NC2032 Insert, TiAlN Coating	612578
6mm Shank, 60°, 40mm Long	612570
6mm Shank, 60°, 60mm Long	612572
6mm Shank, 60°, 100mm Long	612574



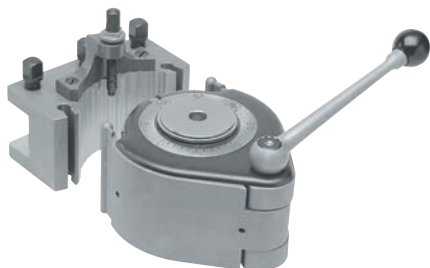
Tool Holding

40 Position Quick Change Tool Post 5 Piece Sets



Other tool holding options available. Shop all at www.SowaTool.ca

A1T	388405
E5T	388410
B2T	388415
C3T	388420
D4T	388425



Driven Tools for DMG MORI, DOOSAN, HAAS & MAZAK Lathes



DMG MORI	
99.MS.A59	381504
99.MS.A60	381505
DOOSAN	
99.DS.A02	381513
99.DS.A12	381515
HAAS	
99.HA.590084	381502
MAZAK	
99.MZ.A65	381510



Radial & Axial options available. Shop all at www.SowaTool.ca

Sowa Tool has your measuring & inspecting needs covered.

SKUs shown are a small selection of our product offering. Visit our Webstore for our complete line card.



WEBSTORE



DOWNLOAD CENTER

Small sample selection only!



Calipers

Dial, Vernier & Electronic, Firm-Joint & Spring Calipers. See all on our Webstore.

Digital Calipers

ASIMETO Mitutoyo Starrett STM



	Asimeto	Mitutoyo
0-6" / 0-150mm	7305062	843223
0-8" / 0-200mm	7305082	843555
0-12" / 0-300mm	7305122	845003

Dial Calipers

ASIMETO Mitutoyo Starrett STM



	Asimeto	Mitutoyo	STM
0 - 6"	7303061	850043	200582
0 - 8"	7303081	850028	200584
0 - 12"	7303121	840199	200586

Micrometers

Mechanical & Digital Inside, Outside, Anvil, Screw Thread & Depth Micrometers. See all on our Webstore.

Digital Outside Micrometers

ASIMETO Mitutoyo Starrett STM



	Asimeto	Mitutoyo
0-1	7105015	840181
1-2	7105025	840182

Outside Micrometers Sets

ASIMETO Mitutoyo Starrett STM



0-3" (3pc)	7101637
0-6" (6pc)	7101667
6-12" (6pc)	7101827
0-12" (12pc)	7101727

Digital Inside Micrometers

ASIMETO Mitutoyo Starrett STM



0.2"-1.2" / 5-30mm	7207011
1.0"-2.0" / 25-50mm	7207021
2.0"-3.0" / 50-75mm	7207031
3.0"-4.0" / 75-100mm	7207041

Anvil Micrometers

ASIMETO Mitutoyo Starrett STM



0 - 6"	840058
6 - 12"	840059
12 - 18"	840062

Indicators

Dial & Electronic Drop Indicators, Test Indicators, Indicator Holder & Bases. See all on our Webstore.

Indicators



ASIMETO Mitutoyo
Starrett NNOGA STM

Range	Asimeto	STM
0-1"	7402265	200755
0-0.5"	7402121	200718
0-1"	7402261	200720
0-2"	7402511	200725

Extended Range Dial Test Indicator Sets



ASIMETO Mitutoyo
Starrett NNOGA STM

Range	Grad.	Accuracy	Dial Dia.	Asimeto
0.060"	0.0005"	±0.0012"	38mm	7504811
0.060"	0.0005"	±0.0012"	30mm	7504813
0.060"	0.001"	±0.0012"	30mm	7504815

Pocket Test Indicators



ASIMETO Mitutoyo STM

0.040"	840473
1.00mm	842594

Asimeto Indicator/Mag Base Kit



ASIMETO Mitutoyo NNOGA

Type III triple jointed magnetic base (7602031)	500730
0-1" 0.001" AGD2 dial indicator (7402261)	

Standard Magnetic Bases



ASIMETO Mitutoyo
NNOGA STM

		Asimeto	Mitutoyo
With 6" Rod and Universal clamp	132 lbf	7601011	846997
With 6" Adjustable Rod / Fine Adjustment	132 lbf	7601021	847852

Gauges

Dial & Digital Bore, Height, Reference, Radius, Telescoping, Drill, Thread Pitch Block, Pin Gauges. See all on our Webstore.

Dial Bore Gauges



ASIMETO Mitutoyo

0.24"-0.4"	7483111
0.4"-0.7"	7483121
0.7"-1.5"	7483211
1.4"-2.4"	7483221
2.0"-6.0"	7483311
6.0"-10.0"	7483321
10.0"-16.0"	7483331

Height Gauges

Other height gauges available. See all on our Webstore.



ASIMETO Mitutoyo

0-12" / 0-300mm	7626120
0-18" / 0-450mm	7626180
0-24" / 0-600mm	7626240

Digital Tire Depth Gauge

0-1.2"/0-30mm 7321010



ASIMETO

Small Hole Gauge Set

0.125"-0.500" 840077



Mitutoyo
Starrett
STM

Telescoping Gauges

	Asimeto	STM
0.315-5.90" Set of 6	7487869	200710



ASIMETO Mitutoyo
Starrett
STM

Reference Gauges

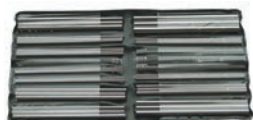
1/32-17/64"	7605401
1/32-1/4"	7605411
1/64-1/2"	7605441
No. 0-36	840236
0.25-2.5mm	7605500



ASIMETO Mitutoyo
STM

Thread Measuring Wire Set

Thread Wire Set 7697300



ASIMETO

Rules & Blocks

Rules, Edge & Center Finders, Parallels & Setup Blocks, etc. See all on our Webstore.

Setup Blocks

1-2-3	230870
2-4-6	230872
1-2-3	230874



Combination Square Sets



4pc Set with E/M rule, 12"/300mm	7490208
4pc Set with 4R rule, 12"/300mm	7490218

Steel Rules



6" Stainless steel, hardened and tempered, with removable pocket clip. 7606009

Digital Protractors



Range: 360°
Resolution: 0.1°
Accuracy: ±0.1°
7490160

With magnetic bottom:
7490162



Gauge Blocks & Spacers



36 Blocks	0	7650020	81 Blocks	0	7650010
	AS-1	7650021		AS-1	7650011
	AS-2	7650022		AS-2	7650012



Edge & Centre Finders



	STM	Mitutoyo
3/8" Edge & Center	231306	840011
1/2" Edge & Center	231308	840012
3/8" Edge	231310	840009
1/2" Edge	231312	840009

Many more available. Shop all at www.SowaTool.ca



Precision Parallel Sets

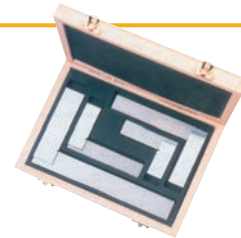
8 Pair 1/2"	7607080
9 Pair 1/4"	7607090
10 Pair 1/8"	7607100
10 Pair 1/32"	7607101



Precision Square Sets

Individual squares available. Shop all at www.SowaTool.ca

SS/A/2-3-4-6	231045
SS/A/2-4-6	231050



Kits

More kits available online.

8" STM Dial Caliper & Engineers Black Book Combo



500135



5pc Precision Tool Kit



7960161

7pc Asimeto Precision Tools Kit



500128



Accessories

See all on our Webstore.

Scribes

Pen Scriber c/w carbide point. 201060
Replacement carbide point. 201065



Micrometer Stands & Accessories

Asimeto	Mitutoyo
7109021	840086



Inspection Surface Plates, Stands & Accessories

12 x 18"	255200
18 x 24"	255205
24 x 36"	255210
36 x 48"	255215
48 x 72"	255220



Partner Brands:



& more!



Sowa Tool has your general shop needs covered.

SKUs shown are a small selection of our product offering. Visit our Webstore for our complete line card.



WEBSTORE



DOWNLOAD CENTER

Small sample selection only!

Hand Tools

A full selection can be found on our Webstore.

Tool Storage



609119



909392

Utility Knives



Knife: **865638**
Replacement Blades
(Pack of 5): **865692**



Hacksaws



231370



Pliers



865961



Hammers & Mallets



Club, 4lb, 12"	231468
Ball Pein, 32 oz, 14"	231472
Polyurethane	231462



Tape Measures

634396



Punches & Chisels

Standard duty	606300
Heavy duty	606302
Replacement point	606304
Punch & Chisel Set	606655



Nut Drivers

7pc Nut Driver Set, Range (inch): 3/16" - 1/2"	505013
--	--------



Screwdrivers

9pc Screwdriver Set	865729
------------------------	--------



Hex Key Sets

10pc Imperial	909284
10pc Metric	909285



Blow Guns

4"	174068
13"	174070

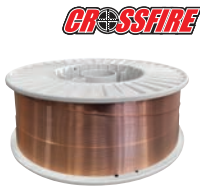


Welding

See all on our Webstore.

Welding Wire

915582



Welders' Beanie

3001328



Flip Front Welding Helmet

895859



Air Carbon Arc Gouging Electrodes

1/4"	3001401
5/16"	3001393



Abrasives & Finishing

Many other sizes & styles available.

Burrs & Burr Sets

1/8"	172984
1/4"	172986



Files

10pc Diamond File Set	200763
8" Flat File	909411



Hand Deburring Blades, Handles & Sets

165006

165024

165482



Coated & Non Woven Abrasives

520298

3011677

920186, 920216, 920223



Power Grinders, Buffers & Sanders

174002



Grinding & Cut-Off Wheels

635608
635700

3011669
915873

635234
635450
635420



Shop Essentials & PPE

See all on our Webstore.

Grease Guns

231382
231380

Grease Cartridge:
917992



80pc SAE
Grease Fitting
Assortment:
231386



Safety Items

Visit our Webstore for more!

912330

908006

911661



Hand Cleaners & Soaps

1 Gallon
907719



Rags & Cloth Towels

891527



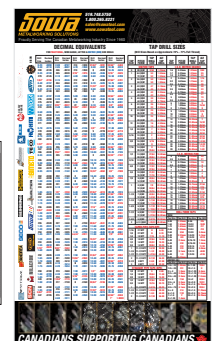
Heaters & Fans

911237



3001225

Tap & Drill Wall & Pocket Reference Chart



Contact
marketing@sowatool.com
for your free wall or
pocket chart.

SOWA's complete line of metalworking solutions



Sowa Tool's premium brand delivers top-tier quality and performance that rivals or exceeds the best in the world. These products offer premium features and dependability, at shockingly affordable prices, making them an ideal choice for applications where accuracy and speed matter most.

ASIMETO

Sowa's family of metrology solutions deliver absolute confidence born from its European engineering, and each tool beginning its journey in our ISO 17025 accredited labs. This premium heritage product priced at a non-premium price, delivers significant value for your money.



With our Sowa branded tools, we bring to our customers high performance cutting tools engineered to deliver superior tool life, machining efficiency & quality while still offering maximum value for your money.

SKODA

Sowa Tool's exclusive line of general-purpose live centres with its roots in European quality that deliver excellent accuracy, rigidity, and durability at a price point that suits most budgets. Sowa carries a wide range of in-stock standard models to suit most common turning applications.



Sowa Tool's exclusive line of European universal boring and facing heads offer superior accuracy and precision for all your facing and boring applications. They feature an easy-to-adjust design, durable castings, and precision spindle bearings for a consistently accurate finish.



Our approach to this brand ensures that our customers receive the best value for their investment by delivering a broad assortment of metalworking tools at an exceptional price. These tools typically apply to less demanding applications seen on the standard shop floor where the cost of the tool has the greatest influence on the selection process.



At Sowa Tool & Machine

we understand the needs of machining processes, and our extensive product lines offer a comprehensive solution. Our goal is to provide customers with the cost benefits of a single-source supplier, while remaining committed to delivering the highest quality products.

Ask for them by name!



Shop Online:

www.SowaTool.ca
marketing@sowatool.com

Sowa Tool & Machine Co. Ltd.

Canadian Headquarters
500 Manitou Drive, Kitchener, ON, N2C 1L3